



file: 280322 plotted by: Ming

A01 FOR SDA ISSUE		28.03.22	MN	RV
A1	No. Description	Date	By	Chk

Disclaimer
 any reports, drawings, advice or information included or referenced that is prepared and/or provided by any other party, including the client/principal, is the sole representation of the party who prepared the report drawings, advice or information and does not constitute a representation by dem (aust) pty limited. dem (aust) pty limited expressly takes no responsibility for any documents, advice or other material prepared by any other party.
 © copyright of dem (aust) pty limited abn 92 085 488 844 and studio iz pty limited abn 20 611 933 52.

Client
 dem (aust) pty limited

Landscape Architecture Consultant
STUDIO IZ
 STUDIO IZ PTY/LTD
 SUITE 103, LEVEL 1, 15 HELP STREET, CHATSWOOD, NSW, 2067
 ABN: 20 611 333 521

Architect
 dem
 planning, urban design, architecture, landscape architecture, interior design
 p: po box 5036 west chatswood nsw 1515
 t: (02) 8966 6000
 w: www.dem.com.au

Services Consultant
LCI
 LCI CONSULTANTS (AUSTRALIA) PTY/LTD
 LEVEL 4, 73 WALKER STREET, NORTH SYDNEY, NSW, 2060
 ABN: 92 124 107 973

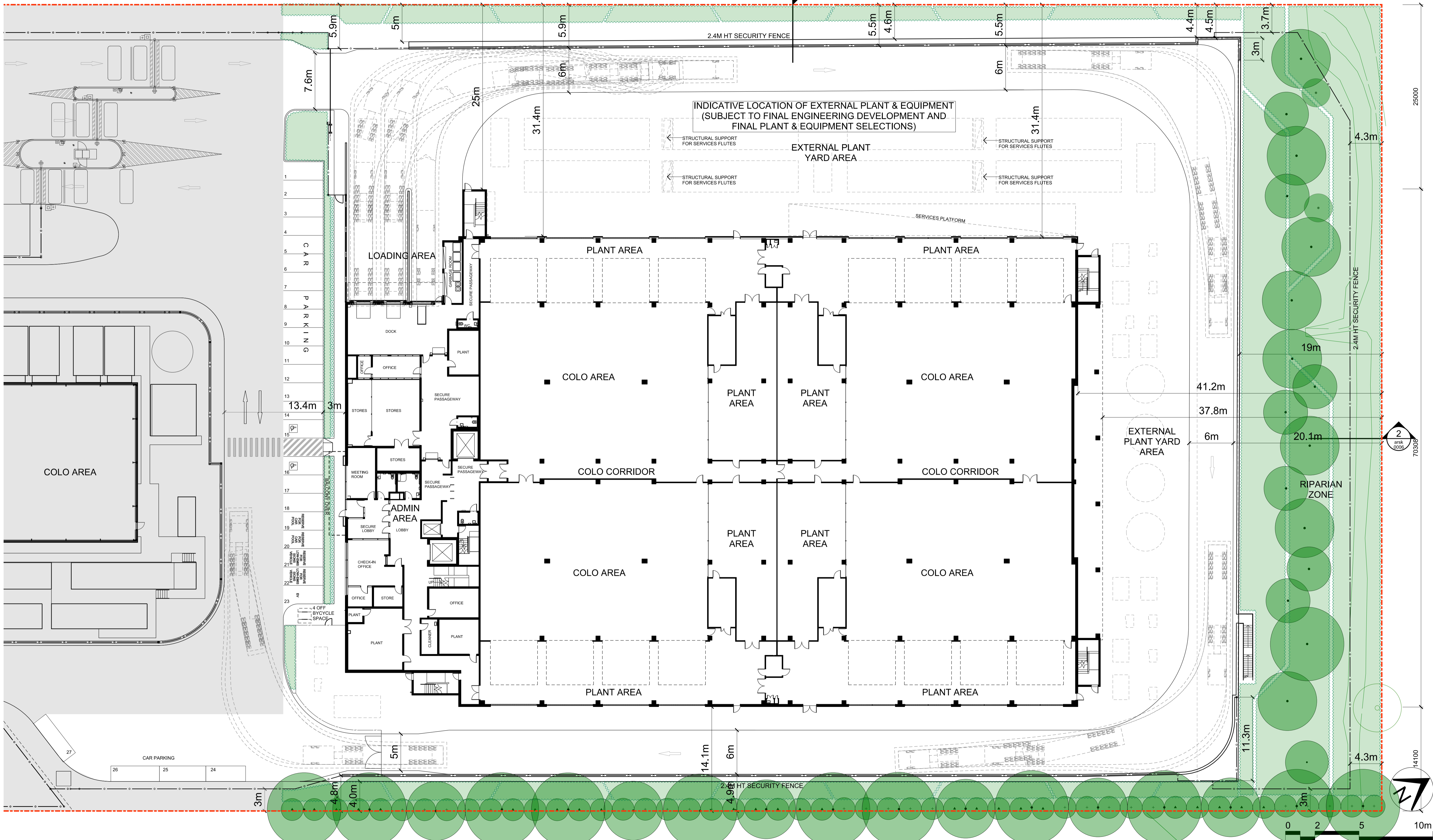
Project
PROPOSED DATA CENTRE
 57 Station Road, Seven Hills NSW 2147

Drawing Title
 site plan

Status	SSDA issue
Scale @ A1	1:500
Project No.	4591-00
Drawing No.	SEARS-arsk0001
Rev	a01

Proposed Data Centre
Development subject to
Blacktown City Council
DA No.DA21/01058

Proposed Data Centre Development subject to SEARS Application



file: 28032222
plotted by: Ming

A01	FOR SSSA ISSUE	28.03.22	MN	RV
A1	No. Description	Date	By	Chk

Disclaimer
any reports, drawings, advice or information included or referenced that is prepared and/or provided by any other party, including the client/principal, is the sole representation of the party who prepared the report drawings, advice or information and does not constitute a representation by dem (aust) pty limited. dem (aust) pty limited expressly takes no responsibility for any documents, advice or other material prepared by any other party.
© copyright of dem (aust) pty limited abn 92 085 488 844 and studio iz pty limited abn 20 611 333 52.

Client
STUDIO IZ
PTY/LTD
SUITE 103, LEVEL 1, 15 HELP STREET,
CHATSWOOD, NSW, 2067
ABN: 20 611 333 521

Landscape Architecture Consultant
STUDIO IZ
PTY/LTD
SUITE 103, LEVEL 1, 15 HELP STREET,
CHATSWOOD, NSW, 2067
ABN: 20 611 333 521

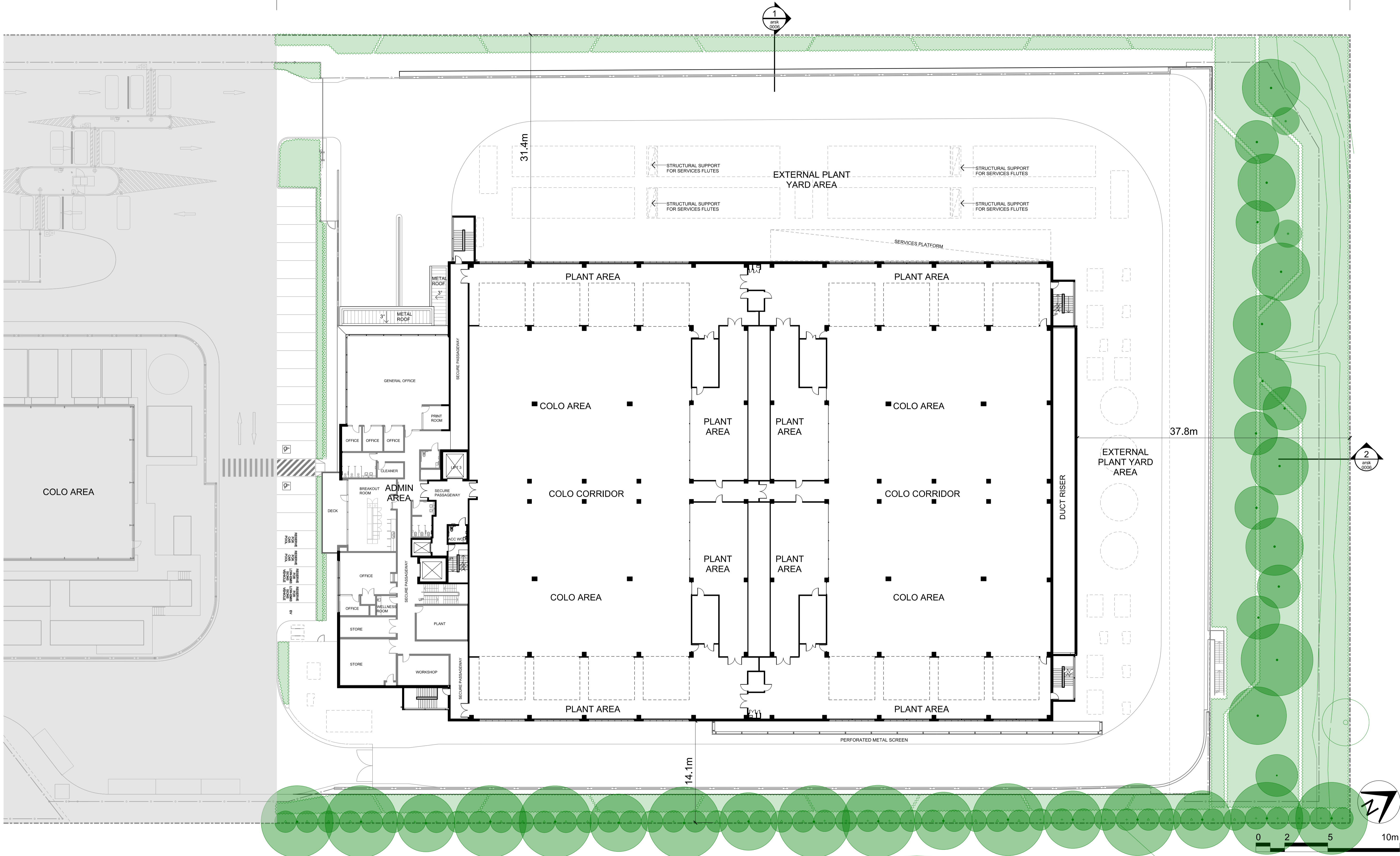
Architect
dem
planning, urban design, architecture,
landscape architecture, interior design
p: po box 5036 west chatswood nsw 1515
t: (02) 8966 6000
w: www.dem.com.au

Services Consultant
LCI
LCI CONSULTANTS
(AUSTRALIA) PTY/LTD
LEVEL 4, 73 WALKER STREET,
NORTH SYDNEY, NSW, 2060
ABN: 92 124 107 973

Project
PROPOSED DATA CENTRE
57 Station Road, Seven Hills
NSW 2147

Drawing Title
level 1 plan

Status
SSDA issue
Scale @ A1: 1:250
Project No.: 4591-00
Drawing No.: SEARS-arsk0002
Rev: a01



file: plotted by: Ming

Disclaimer
any reports, drawings, advice or information included or referenced that is prepared and/or provided by any other party, including the client/principal, is the sole representation of the party who prepared the report drawings, advice or information and does not constitute a representation by dem (aust) pty limited. dem (aust) pty limited expressly takes no responsibility for any documents, advice or other material prepared by any other party.
© copyright of dem (aust) pty limited abn 92 085 488 844 and studio iz pty limited abn 20 611 333 52.

Client
STUDIO IZ
PTY/LTD

Landscape Architecture Consultant
STUDIO IZ
PTY/LTD
SUITE 103, LEVEL 1, 15 HELP STREET,
CHATSWOOD, NSW, 2067
ABN: 20 611 333 521

Architect
dem
planning, urban design, architecture,
landscape architecture, interior design
p: po box 5036 west chatswood nsw 1515
t: (02) 8966 6000
w: www.dem.com.au

Services Consultant
LCI
LCI CONSULTANTS
(AUSTRALIA) PTY/LTD
LEVEL 4, 73 WALKER STREET,
NORTH SYDNEY, NSW, 2060
ABN: 92 124 107 973

Project
PROPOSED DATA CENTRE
57 Station Road, Seven Hills
NSW 2147

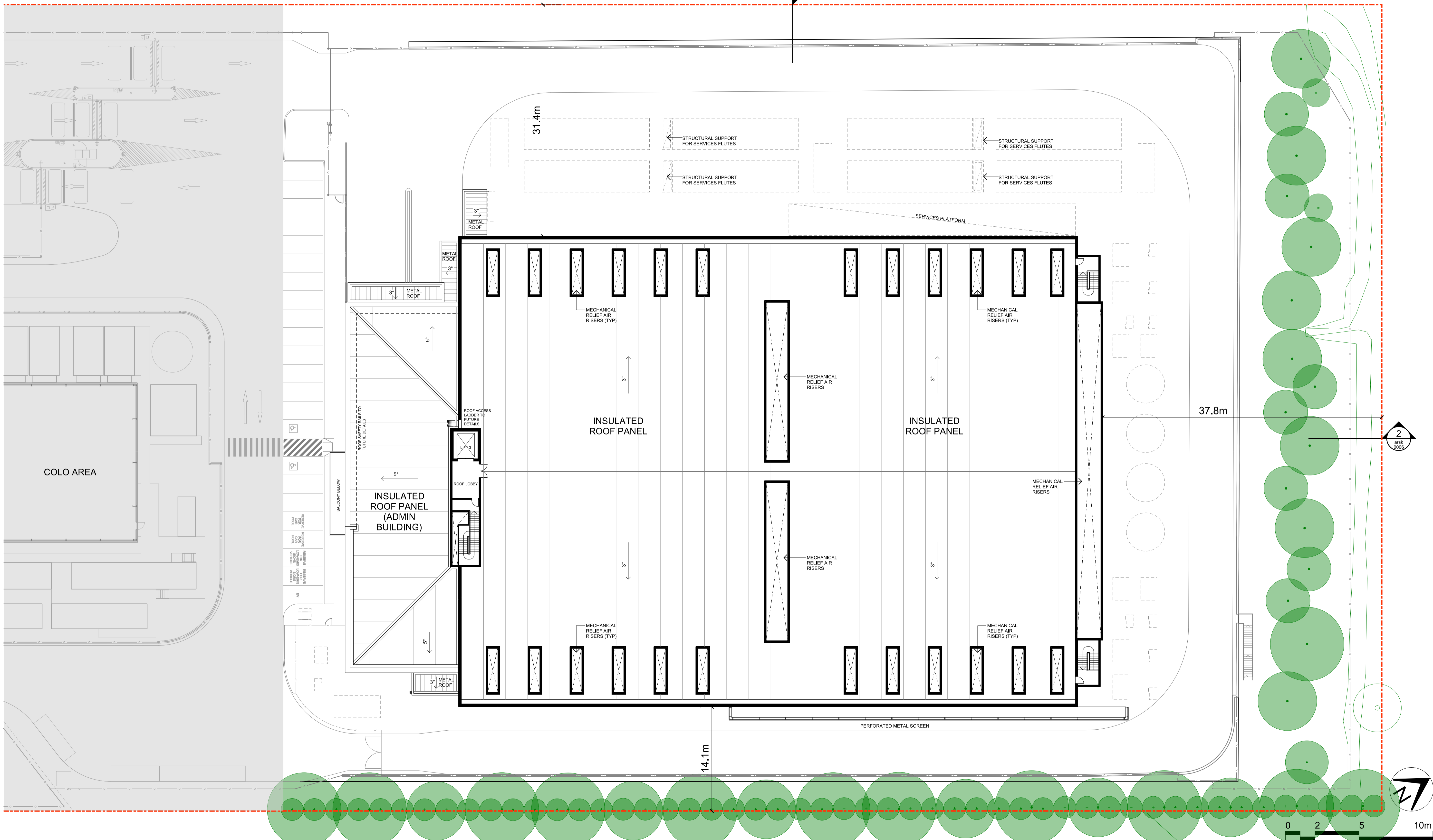
Drawing Title
level 2 plan

Status
SSDA issue
Scale @ A1
1:250
Project No.
4591-00
Drawing No.
SEARS-arsk0003
Rev
a01

No.	Description	Date	By	Chk
A01	FOR SSDA ISSUE	28.03.22	MN	RV

Proposed Data Centre
Development subject to
Blacktown City Council
DA No.DA21/01058

Proposed Data Centre Development subject to SEARS Application



file: plotted by: Ming

Disclaimer
any reports, drawings, advice or information included or referenced that is prepared and/or provided by any other party, including the client/principal, is the sole representation of the party who prepared the report drawings, advice or information and does not constitute a representation by dem (aust) pty limited. dem (aust) pty limited expressly takes no responsibility for any documents, advice or other material prepared by any other party.
© copyright of dem (aust) pty limited abn 92 085 488 844 and studio iz pty limited abn 20 611 333 52.

Client
STUDIO IZ
PTY/LTD

Landscape Architecture Consultant
STUDIO IZ
PTY/LTD
SUITE 103, LEVEL 1, 15 HELP STREET,
CHATSWOOD, NSW, 2067
ABN: 20 611 333 521

Architect
dem
planning, urban design, architecture,
landscape architecture, interior design
p: po box 5036 west chatswood nsw 1515
t: (02) 8966 6000
w: www.dem.com.au

Services Consultant
LCI
LCI CONSULTANTS
(AUSTRALIA) PTY/LTD
LEVEL 4, 73 WALKER STREET,
NORTH SYDNEY, NSW, 2060
ABN: 92 124 107 973

Project
PROPOSED DATA CENTRE
57 Station Road, Seven Hills
NSW 2147

Drawing Title
roof lobby plan

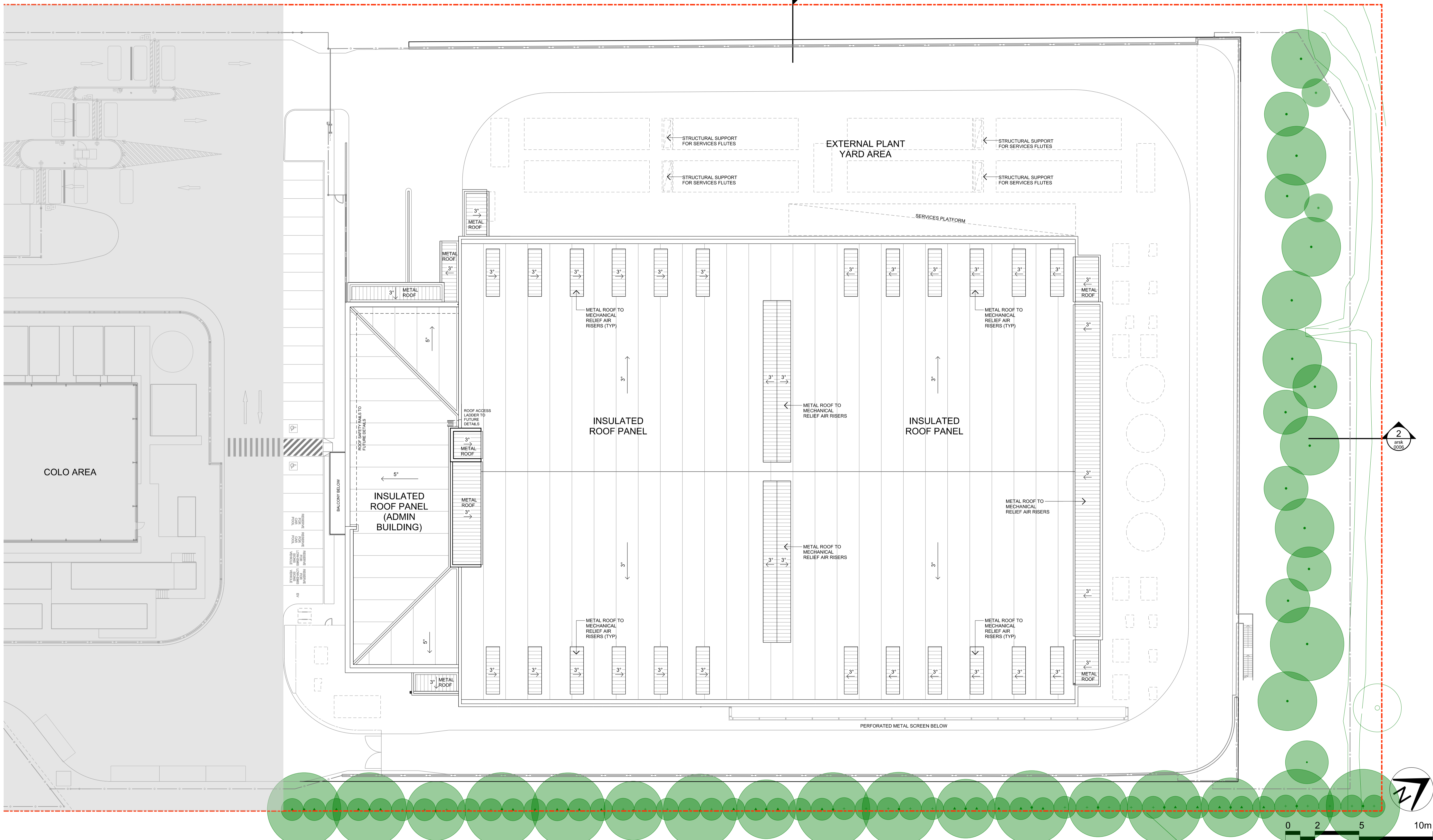
Status
SSDA issue
Scale @ A1
1:250
Project No.
4591-00
Drawing No.
SEARS-arsk0004

No.	Description	Date	By	Chk
A01	FOR SSDA ISSUE	28.03.22	MN	RV
A1				

Rev a01

Proposed Data Centre
Development subject to
Blacktown City Council
DA No.DA21/01058

Proposed Data Centre Development subject to SEARS Application



file: plotted by: Ming

Rev	Description	Date	By	Chk
A1	FOR SDA ISSUE	28.03.22	MN	RV

Disclaimer
any reports, drawings, advice or information included or referenced that is prepared and/or provided by any other party, including the client/principal, is the sole representation of the party who prepared the report drawings, advice or information and does not constitute a representation by dem (aust) pty limited. dem (aust) pty limited expressly takes no responsibility for any documents, advice or other material prepared by any other party.
© copyright of dem (aust) pty limited abn 92 085 488 844 and studio iz pty limited abn 20 611 333 52.

Client
STUDIO IZ
PTY/LTD
SUITE 103, LEVEL 1, 15 HELP STREET,
CHATSWOOD, NSW, 2067
ABN: 20 611 333 521

Landscape Architecture Consultant
STUDIO IZ
PTY/LTD
SUITE 103, LEVEL 1, 15 HELP STREET,
CHATSWOOD, NSW, 2067
ABN: 20 611 333 521

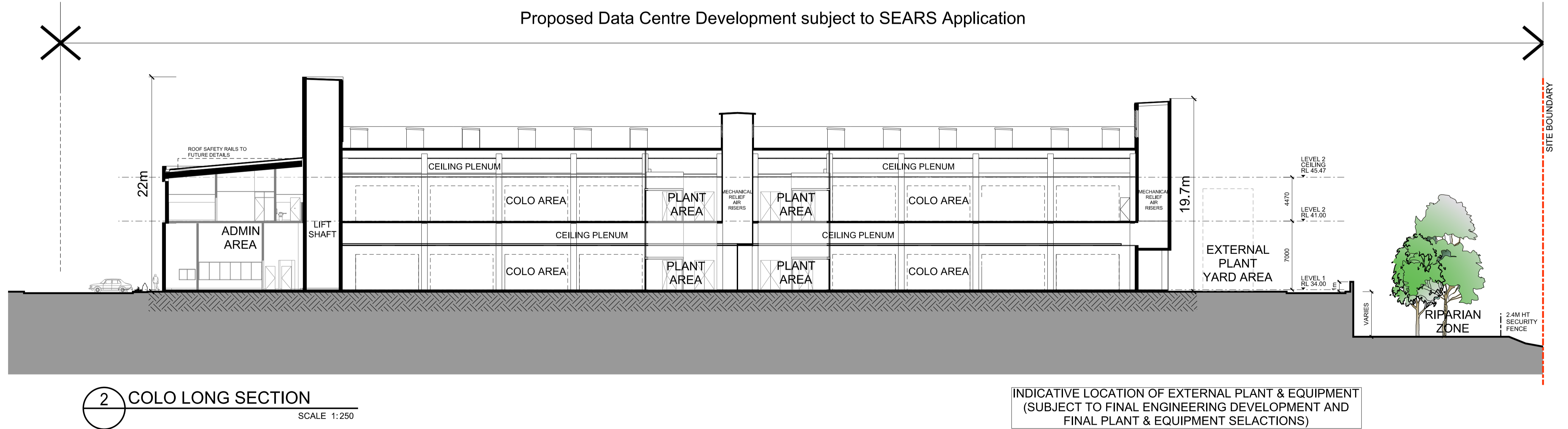
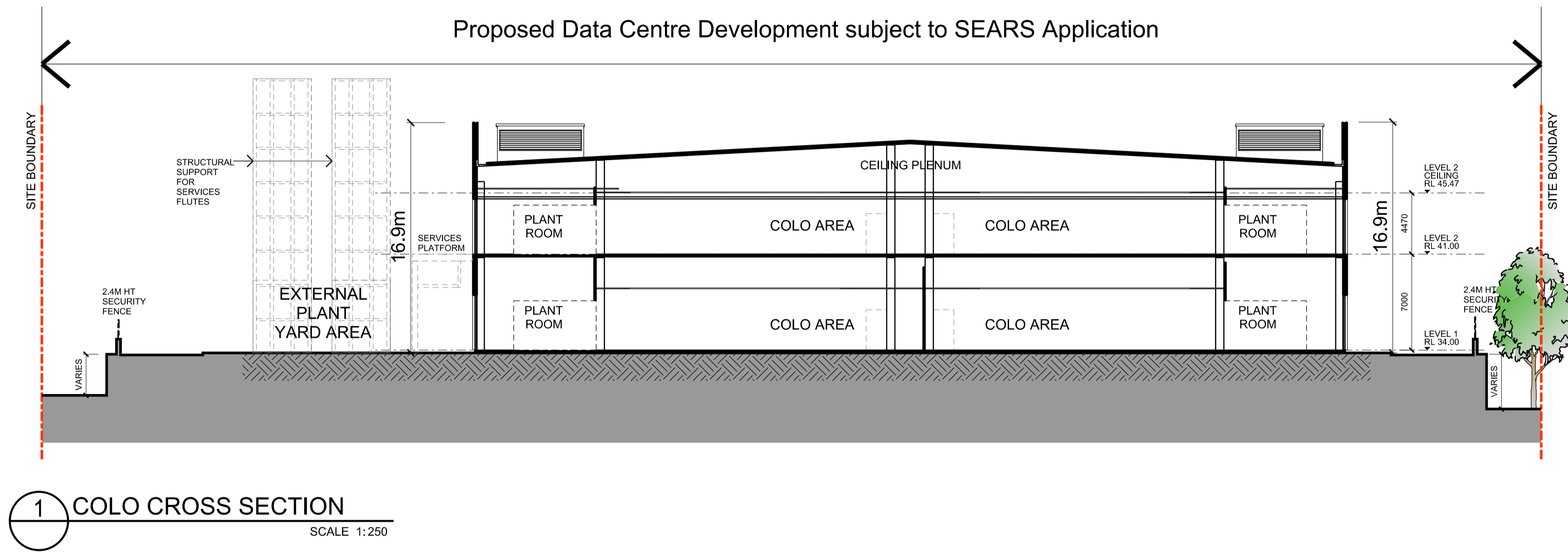
Architect
dem
planning, urban design, architecture,
landscape architecture, interior design
p: po box 5036 west chatswood nsw 1515
t: (02) 9966 6000
w: www.dem.com.au

Services Consultant
LCI
LCI CONSULTANTS
(AUSTRALIA) PTY/LTD
LEVEL 4, 73 WALKER STREET,
NORTH SYDNEY, NSW, 2060
ABN: 92 124 107 973

Project
PROPOSED DATA CENTRE
57 Station Road, Seven Hills
NSW 2147

Drawing Title
roof plan

Status	SSDA issue
Scale @ A1	1:250
Project No.	4591-00
Drawing No.	SEARS-arsk0005
Rev	a01



Proposed Data Centre Development subject to Blacktown City Council DA No.DA21/01058



file: 28/03/22
plotted by: Ming

No.	Description	Date	By	Chk
A01	FOR SDA ISSUE	28.03.22	MN	RV
A1				

Disclaimer
any reports, drawings, advice or information included or referenced that is prepared and/or provided by any other party, including the client/principal, is the sole representation of the party who prepared the report drawings, advice or information and does not constitute a representation by dem (aust) pty limited. dem (aust) pty limited expressly takes no responsibility for any documents, advice or other material prepared by any other party.
© copyright of dem (aust) pty limited abn 92 085 488 844 and studio iz pty limited abn 20 611 333 52.

Client
STUDIO IZ
PTY/LTD

Landscape Architecture Consultant
STUDIO IZ
PTY/LTD
SUITE 103, LEVEL 1, 15 HELP STREET,
CHATSWOOD, NSW, 2067
ABN: 20 611 333 521

Architect
dem
planning, urban design, architecture,
landscape architecture, interior design
p: po box 5036 west chatswood nsw 1515
t: (02) 8966 6000
w: www.dem.com.au

Services Consultant
LCI CONSULTANTS
(AUSTRALIA) PTY/LTD
LEVEL 4, 73 WALKER STREET,
NORTH SYDNEY, NSW, 2060
ABN: 92 124 107 973

Project
PROPOSED DATA CENTRE
57 Station Road, Seven Hills
NSW 2147

Drawing Title
sections

Status
SSDA issue

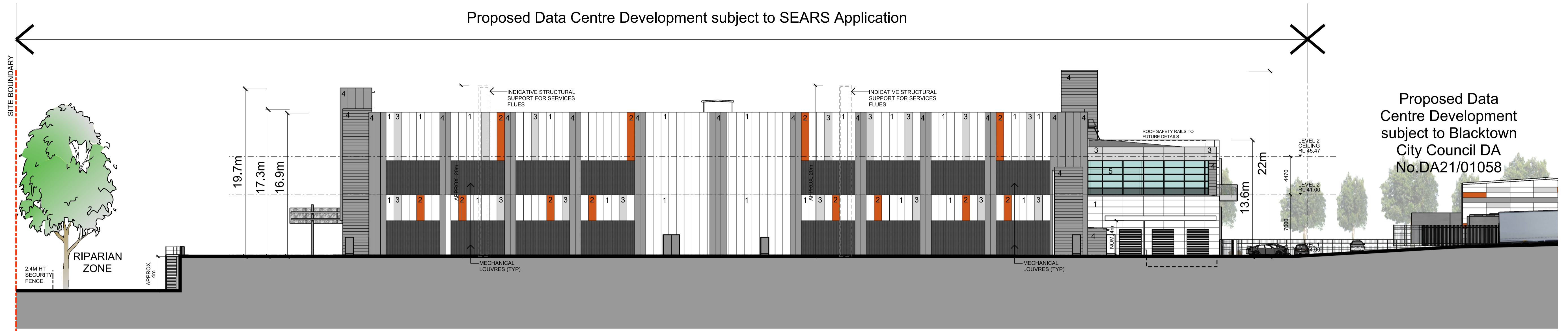
Scale @ A1
1:250

Project No.
4591-00

Drawing No.
SEARS-arsk0006

Rev
a01

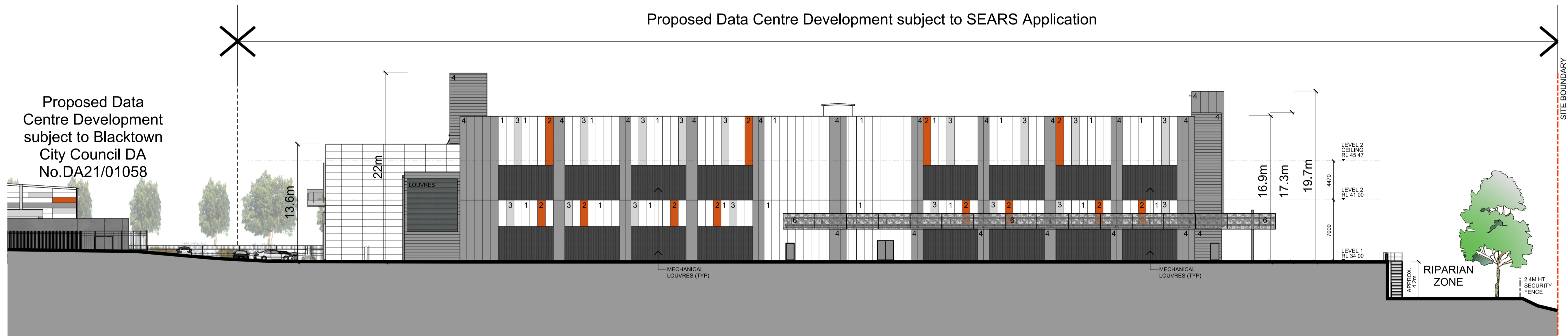
Proposed Data Centre Development subject to SEARS Application



Proposed Data Centre Development subject to Blacktown City Council DA No.DA21/01058

1 NORTH-WEST ELEVATION
SCALE 1:250

Proposed Data Centre Development subject to SEARS Application



Proposed Data Centre Development subject to Blacktown City Council DA No.DA21/01058

2 SOUTH-EAST ELEVATION
SCALE 1:250

- 1. Colorbond Thredbo White
- 2. Colorbond Copper Penny
- 3. Colorbond Shale Grey
- 4. Colorbond Woodland Grey
- 5. Green Glass Natural Anodised Frames
- 6. Perforated metal screen Colour : Natural Anodised

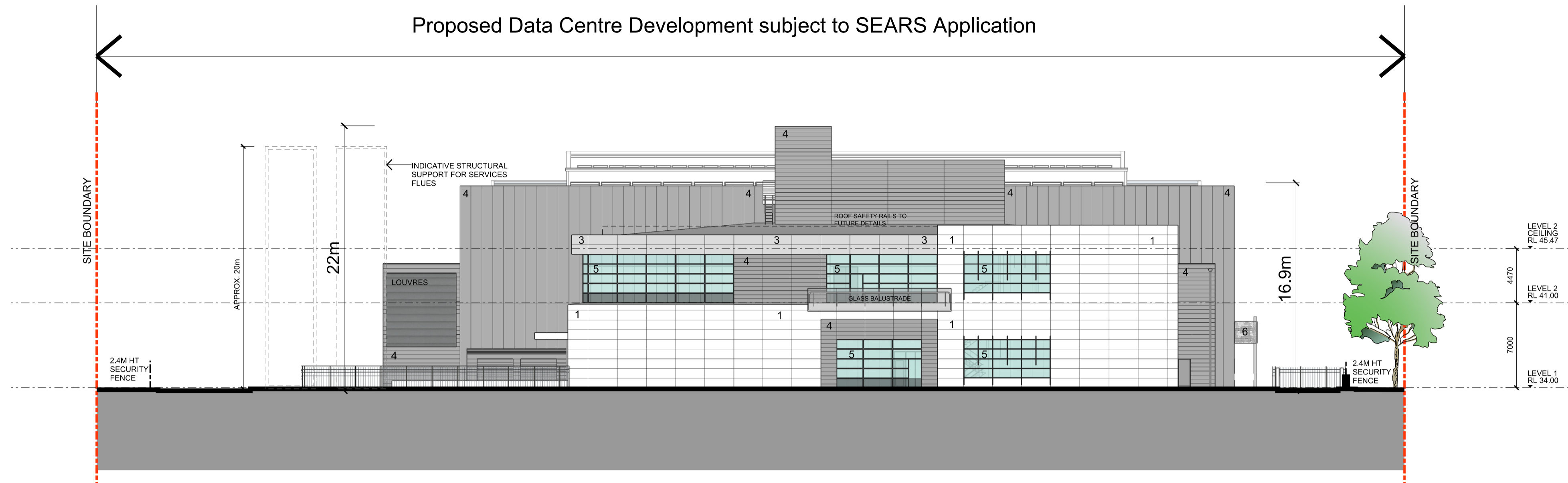


<p>Disclaimer</p> <p>any reports, drawings, advice or information included or referenced that is prepared and/or provided by any other party, including the client/principal, is the sole representation of the party who prepared the report drawings, advice or information and does not constitute a representation by dem (aust) pty limited. dem (aust) pty limited expressly takes no responsibility for any documents, advice or other material prepared by any other party.</p> <p>© copyright of dem (aust) pty limited abn 92 085 488 844 and studio iz pty limited abn 20 611 333 52.</p>	<p>Client</p> <p>SEARS</p>	<p>Landscape Architecture Consultant</p> <p>STUDIO IZ PTY/LTD</p> <p>SUITE 103, LEVEL 1, 15 HELP STREET, CHATSWOOD, NSW, 2067 ABN: 20 611 333 521</p>	<p>Architect</p> <p>planning, urban design, architecture, landscape architecture, interior design p: po box 5036 west chatswood nsw 1515 t: (02) 9966 6000 w: www.dem.com.au</p> <p>dem</p>	<p>Services Consultant</p> <p>LCI (AUSTRALIA) PTY/LTD</p> <p>LEVEL 4, 73 WALKER STREET, NORTH SYDNEY, NSW, 2060 ABN: 92 124 107 973</p>	<p>Project</p> <p>PROPOSED DATA CENTRE 57 Station Road, Seven Hills NSW 2147</p>	<p>Drawing Title</p> <p>elevations - sheet 1</p>	<p>Status</p> <p>SSDA issue</p> <p>Scale @ A1: 1:250</p> <p>Project No.: 4591-00</p> <p>Drawing No.: SEARS-arsk0007</p> <p>Rev: a01</p>
-------------------------------------------------------------------------------------------------------------------------------------------------------------------------------------------------------------------------------------------------------------------------------------------------------------------------------------------------------------------------------------------------------------------------------------------------------------------------------------------------------------------------------------------------------------------------------------------------------------	-----------------------------------	-----------------------------------------------------------------------------------------------------------------------------------------------------------------------------	-----------------------------------------------------------------------------------------------------------------------------------------------------------------------------------------------------------------------	---------------------------------------------------------------------------------------------------------------------------------------------------------------	----------------------------------------------------------------------------------------------------	---------------------------------------------------------	-------------------------------------------------------------------------------------------------------------------------------------------------------

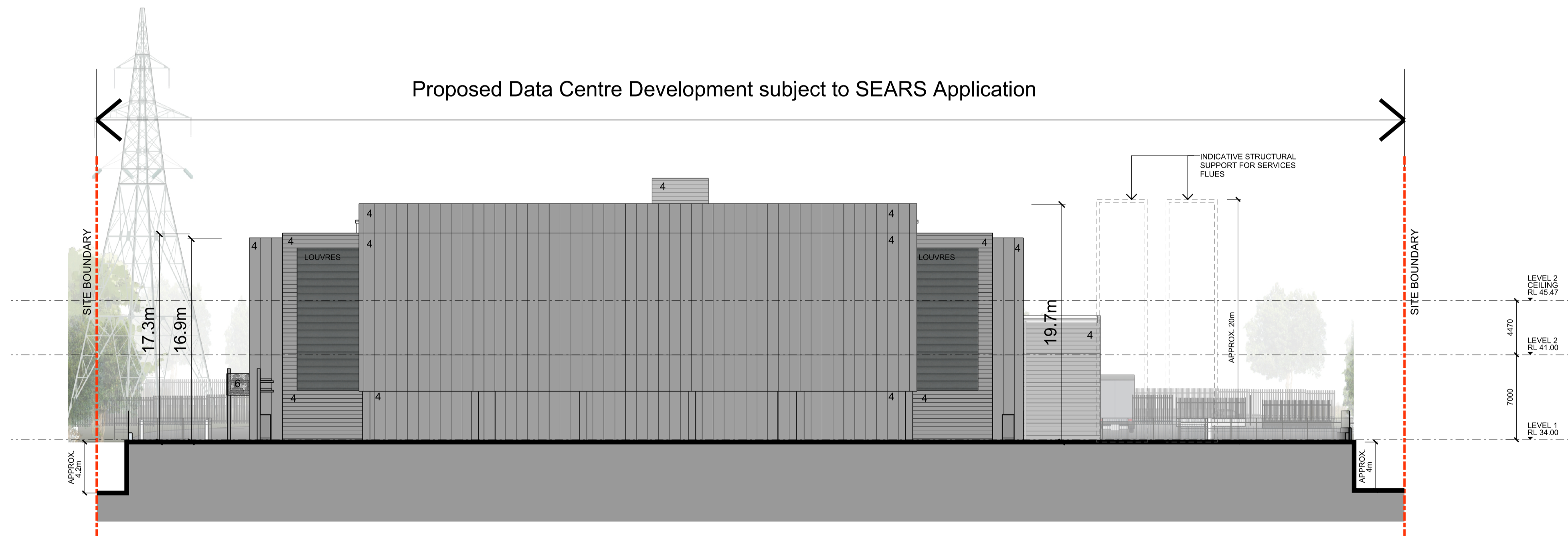
file: A01 FOR SSDA ISSUE 28.03.22 MN RV

plotted by: Ming

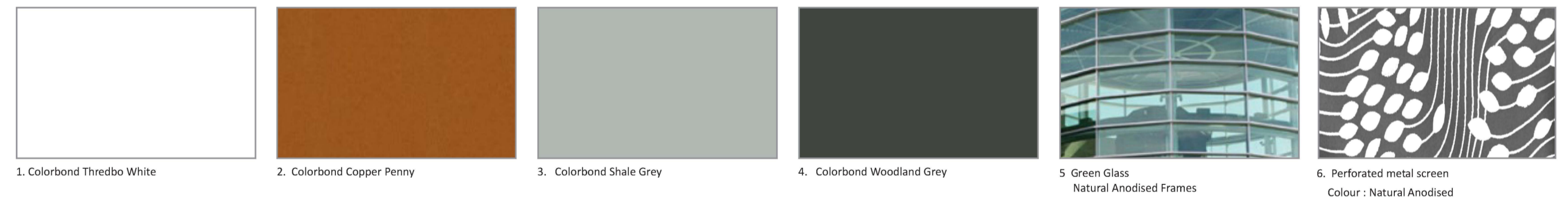
No.	Description	Date	By	Chk
A1	FOR SSDA ISSUE	28.03.22	MN	RV



1 SOUTH-WEST ELEVATION
SCALE 1:250



2 NORTH-EAST ELEVATION
SCALE 1:250



file: plotted by: Ming

Disclaimer
any reports, drawings, advice or information included or referenced that is prepared and/or provided by any other party, including the client/principal, is the sole representation of the party who prepared the report drawings, advice or information and does not constitute a representation by dem (aust) pty limited. dem (aust) pty limited expressly takes no responsibility for any documents, advice or other material prepared by any other party.
© copyright of dem (aust) pty limited abn 92 085 488 844 and studio iz pty limited abn 20 611 333 52.

Client
SSDA issue

Landscape Architecture Consultant
STUDIO IZ
PTY/LTD
SUITE 103, LEVEL 1, 15 HELP STREET,
CHATSWOOD, NSW, 2067
ABN: 20 611 333 521

Architect
dem
planning, urban design, architecture,
landscape architecture, interior design
p: po box 5036 west chatswood nsw 1515
t: (02) 9966 6000
w: www.dem.com.au

Services Consultant
LCI
LCI CONSULTANTS
(AUSTRALIA) PTY/LTD
LEVEL 4, 73 WALKER STREET,
NORTH SYDNEY, NSW, 2060
ABN: 92 124 107 973

Project
PROPOSED DATA CENTRE
57 Station Road, Seven Hills
NSW 2147

Drawing Title
elevations - sheet 2

Status
SSDA issue
Scale @ A1
1:250
Project No.
4591-00
Drawing No.
SEARS-arsk0008
Rev
a01

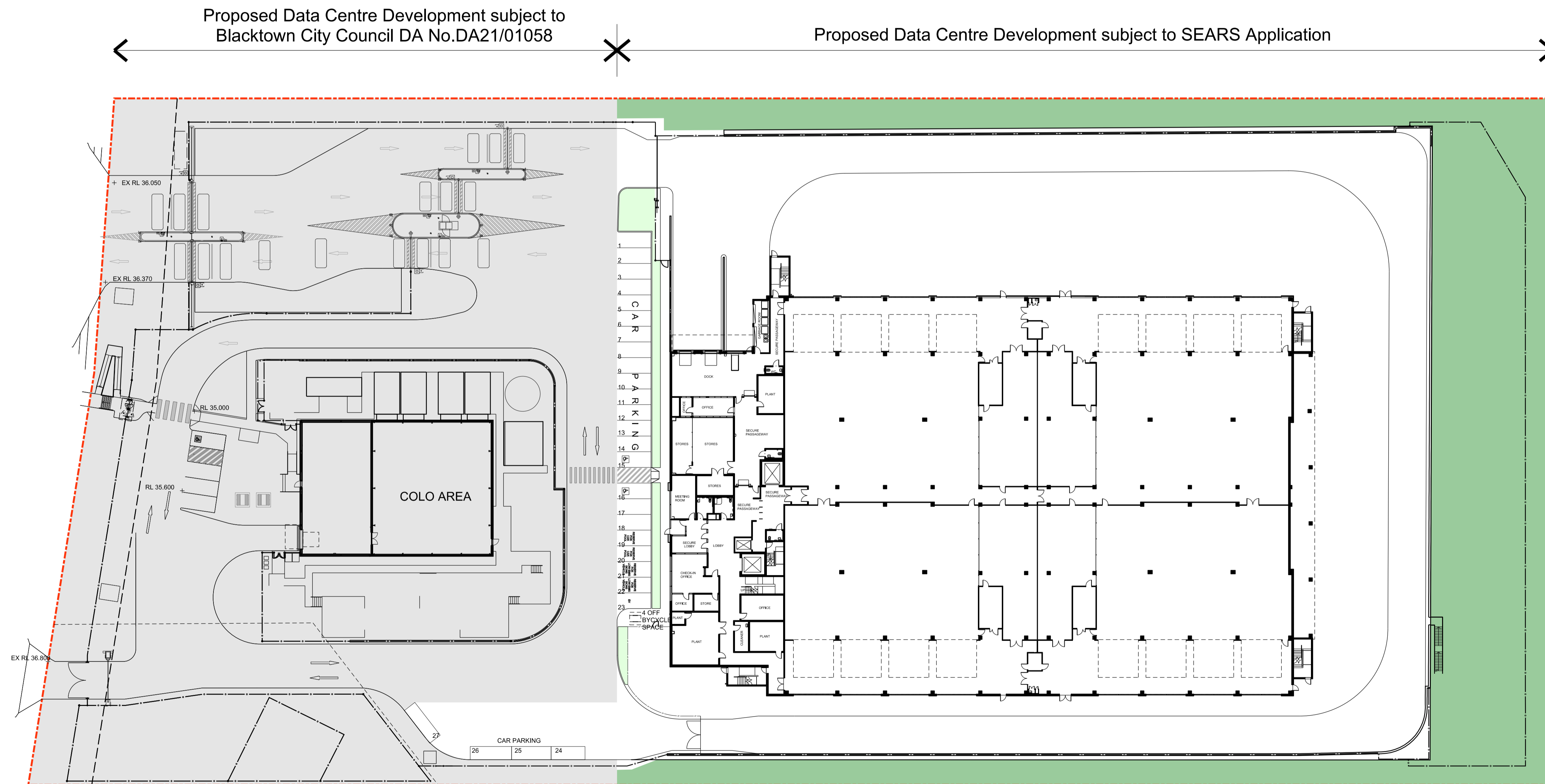
No.	Description	Date	By	Chk
A01	FOR SSDA ISSUE	28.03.22	MN	RV
A1				

TOTAL SITE AREA FOR BOTH SYD 08 & SYD 09 = 2.57ha

SYD 08:
 PROPOSED LANDSCAPE AREA (DARK GREEN + LIGHT GREEN SHADED AREA)
 = 3,343 SQM

PROPOSED DEEP SOIL AREA (DARK GREEN SHADED AREA)
 = 3,226 SQM

SYD 09 (AS PART OF DA NO. DA21/01058):
 PROPOSED LANDSCAPE AREA = 2,392 SQM
 PROPOSED DEEP SOIL AREA = 2,828 SQM



file: plotted by: Ming

Disclaimer
 any reports, drawings, advice or information included or referenced that is prepared and/or provided by any other party, including the client/principal, is the sole representation of the party who prepared the report/drawings, advice or information and does not constitute a representation by dem (aust) pty limited. dem (aust) pty limited expressly takes no responsibility for any documents, advice or other material prepared by any other party.
 © copyright of dem (aust) pty limited abn 92 085 488 844 and studio iz pty limited abn 20 611 333 52.

Client
 SEARS

Landscape Architecture Consultant
STUDIO IZ
 STUDIO IZ PTY/LTD
 SUITE 103, LEVEL 1, 15 HELP STREET, CHATSWOOD, NSW, 2067
 ABN: 20 611 333 521

Architect
 dem
 planning, urban design, architecture, landscape architecture, interior design
 p: po box 5036 west chatswood nsw 1515
 t: (02) 8966 6000
 w: www.dem.com.au

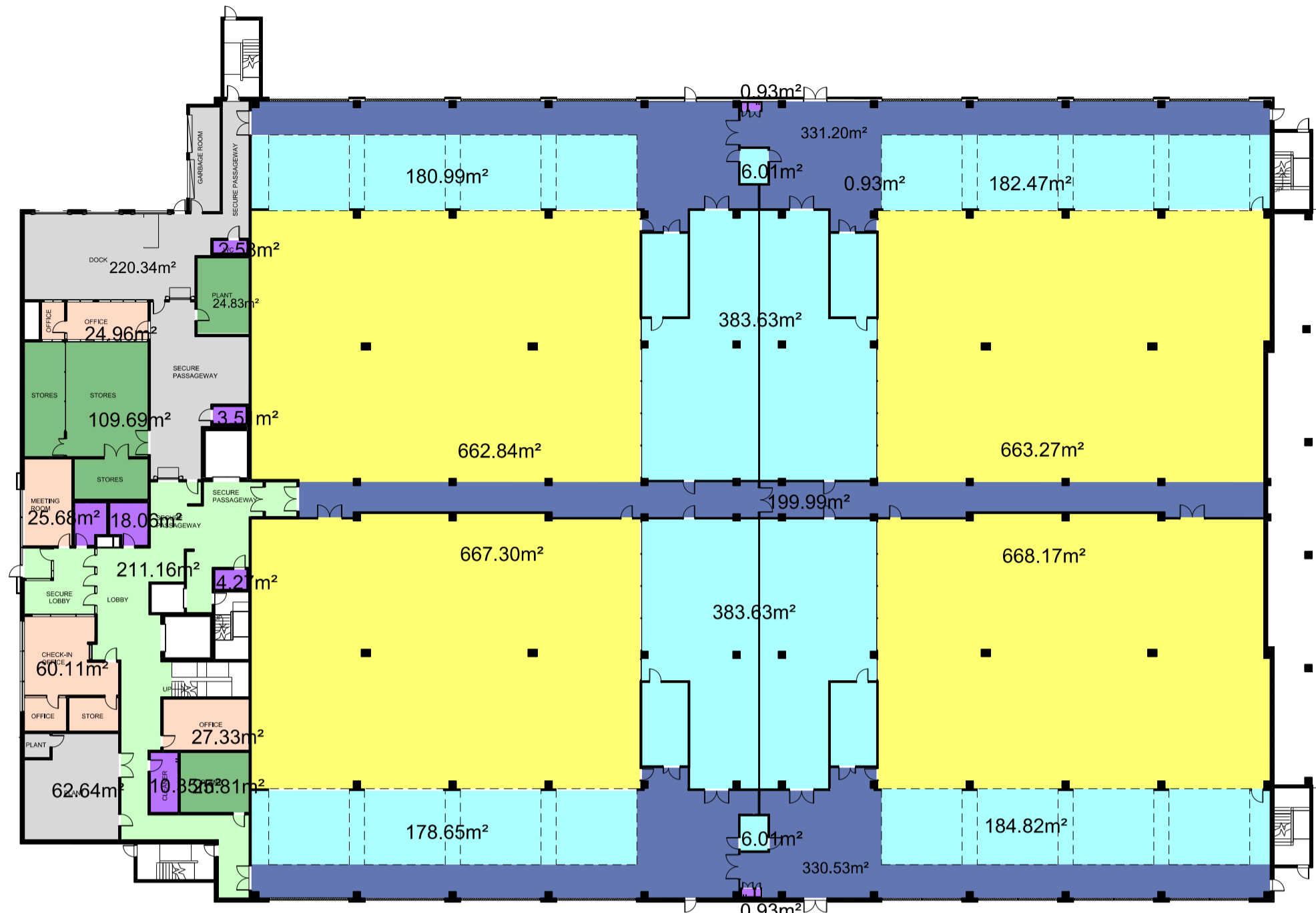
Services Consultant
LCI
 LCI CONSULTANTS (AUSTRALIA) PTY/LTD
 LEVEL 4, 73 WALKER STREET, NORTH SYDNEY, NSW, 2060
 ABN: 92 124 107 973

Project
 PROPOSED DATA CENTRE
 57 Station Road, Seven Hills NSW 2147

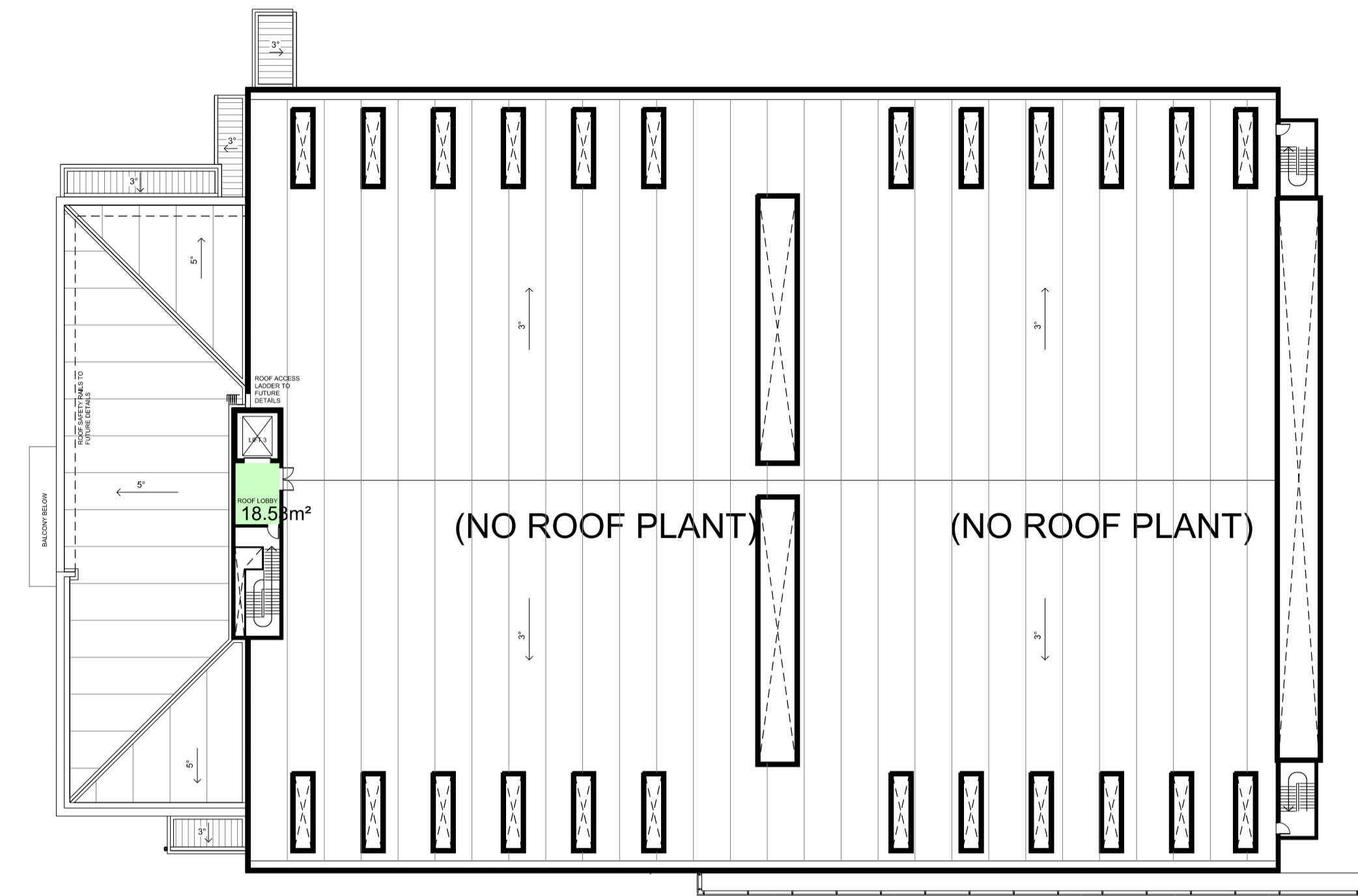
Drawing Title
 landscape area calculation

Status
 SSSA issue
Scale @ A1
 1:400
Project No.
 4591-00
Drawing No.
 SEARS-arsk0009
Rev
 a01

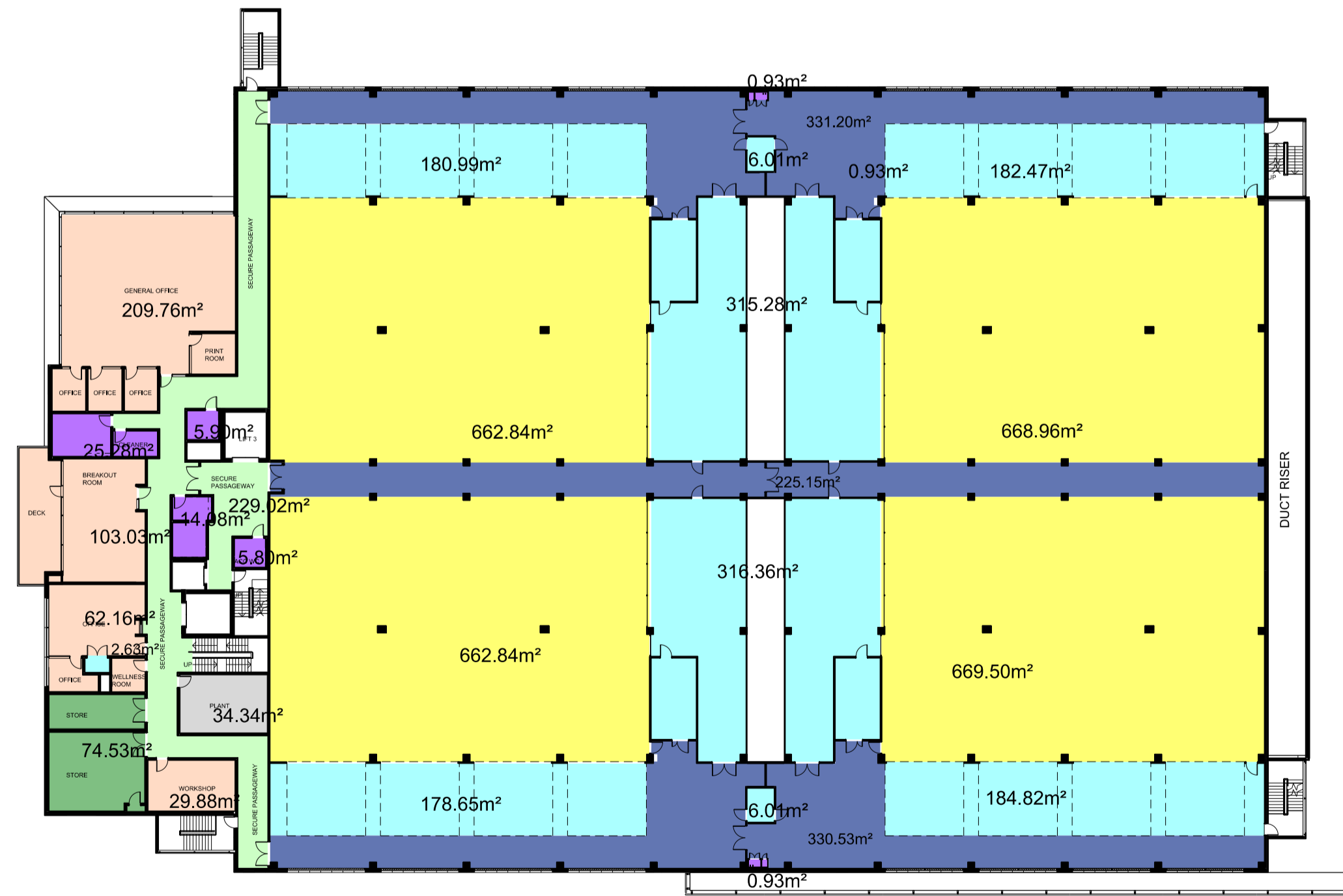
No.	Description	Date	By	Chk
A01	FOR SSSA ISSUE	28.03.22	MN	RV



LEVEL 1



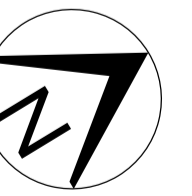
ROOF LOBBY



LEVEL 2

	Level 1	Level 2	Roof Lobby	Total GFA	Total non-GFA
Light Grey – BoH / ancillary plant	283.0 m ²	34.3 m ²			317.3 m ²
Green – Storage	160.3 m ²	74.5 m ²		234.9 m ²	
Light Orange – Admin / office / break out areas	138.1 m ²	407.5 m ²		545.5 m ²	
Light Purple – w/cs / amenities	40.6 m ²	52.9 m ²		93.6 m ²	
Light Green – Circulation areas/ lobby / Vestibule	211.2 m ²	229.0 m ²	18.5 m ²	458.7 m ²	
Light Yellow – Colo Areas	2661.6 m ²	2664.1 m ²		5325.7 m ²	
Blue – Mech & Colo corridor	705.4 m ²	712.4 m ²		1417.8 m ²	
Light Blue – Plant Areas	1506.2 m ²	1370.6 m ²			2876.8 m ²
	5706.4 m²	5545.4 m²	18.5 m²	8076.2 m²	3194.1 m²

file: 13/04/22
plotted by: Ming



FOR SDA ISSUE	28.03.22	MN	RV
No. Description	Date	By	Chk
A1			

Disclaimer
any reports, drawings, advice or information included or referenced that is prepared and/or provided by any other party, including the client/principal, is the sole representation of the party who prepared the report/drawings, advice or information and does not constitute a representation by dem (aust) pty limited. dem (aust) pty limited expressly takes no responsibility for any documents, advice or other material prepared by any other party.
© copyright of dem (aust) pty limited abn 92 085 488 844 and studio iz pty limited abn 20 611 333 52.

Client
STUDIO IZ
PTY/LTD
SUITE 103, LEVEL 1, 15 HELP STREET,
CHATSWOOD, NSW, 2067
ABN: 20 611 333 521

Landscape Architecture Consultant
STUDIO IZ
PTY/LTD
SUITE 103, LEVEL 1, 15 HELP STREET,
CHATSWOOD, NSW, 2067
ABN: 20 611 333 521

Architect
dem
planning, urban design, architecture,
landscape architecture, interior design
p: po box 5036 west chatswood nsw 1515
t: (02) 8966 6000
w: www.dem.com.au

Services Consultant
LCI
LCI CONSULTANTS
(AUSTRALIA) PTY/LTD
LEVEL 4, 73 WALKER STREET,
NORTH SYDNEY, NSW, 2060
ABN: 92 124 107 973

Project
PROPOSED DATA CENTRE
57 Station Road, Seven Hills
NSW 2147

Drawing Title
GFA area calculation

Status
SSDA issue
Scale @ A1
1:400
Project No.
4591-00
Drawing No.
SEARS-arsk0010
Rev
a01